

## Product Documentation



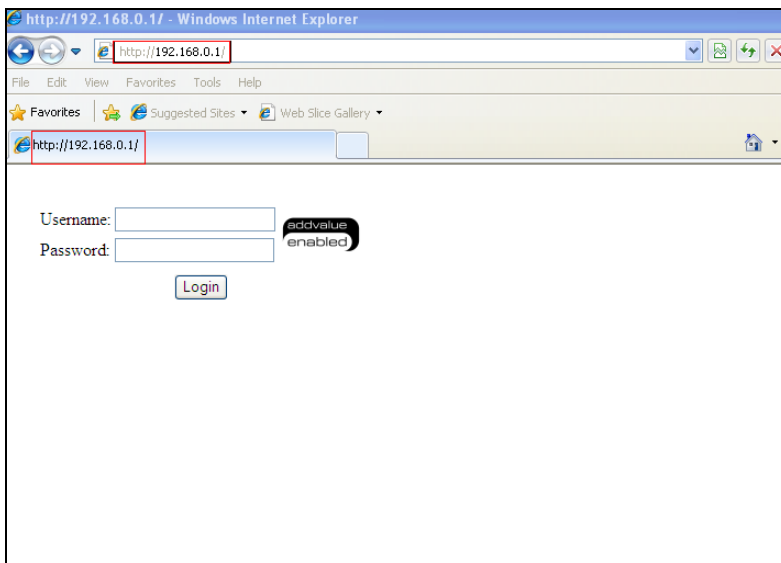
Rev. Date <b>Jun-29-2011</b>	Rev. <b>0.1</b>	Document No. <b>SEAG-005</b>
<b>Seagull 5000i BDU Firmware Upgrade Procedure</b>		

<b>DOCUMENT REVISION HISTORY</b>				
<b>Revision</b>	<b>Date</b>	<b>Change description</b>	<b>Author</b>	<b>Remarks</b>
0.1	Jun-29-2011	Draft	Haorong	

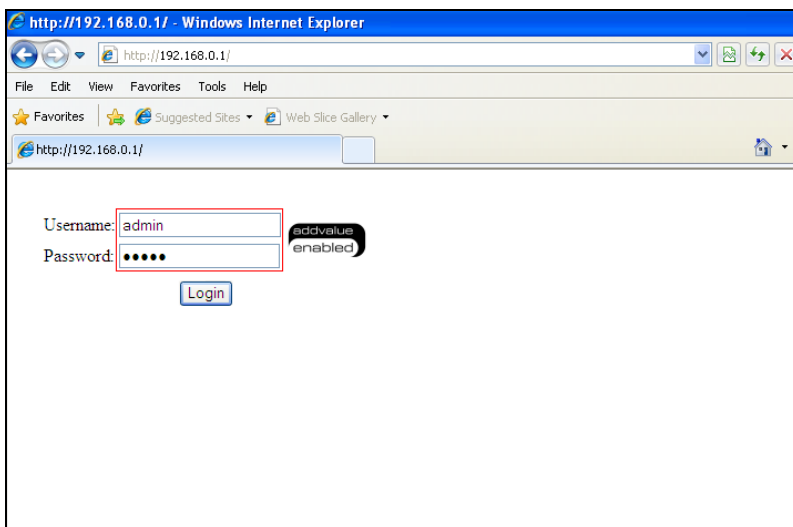
<b>Preparation Committee</b>	<b>Reviewer Committee</b>
Haorong Zhu	E.M.L Ekanayake

Rev. Date <b>Jun-29-2011</b>	Rev. <b>0.1</b>	Document No. <b>SEAG-005</b>
<b>Seagull 5000i BDU Firmware Upgrade Procedure</b>		

- 1) Power up the Seagull 5000i Terminal.
- 2) Using a web browser (Internet Explorer, Firefox, etc), open the WebConsole via <http://192.168.0.1>
- 3) The following screen will appear and prompt for username and password.

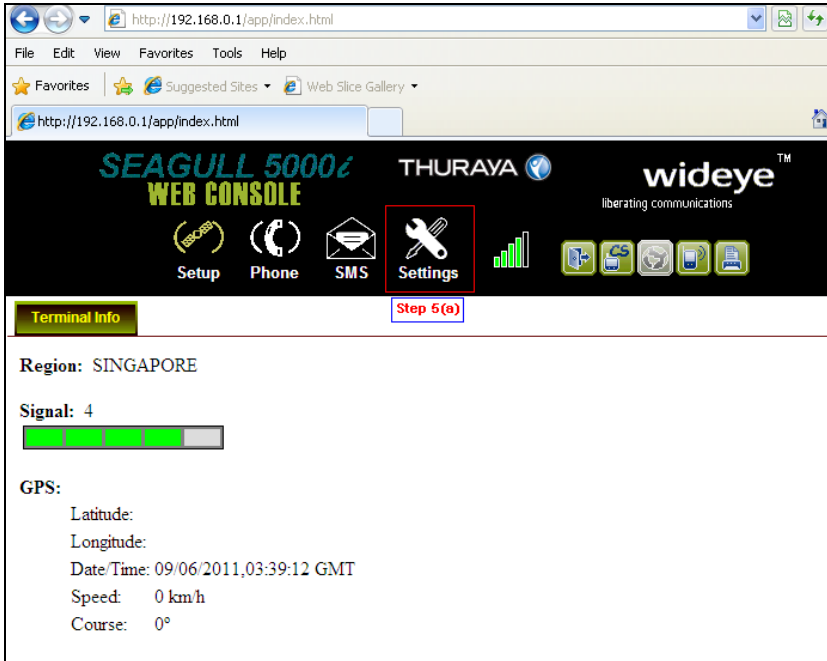


- 4) Fill in both fields and click 'Login' to log on to the WebConsole. (Note: Username and Password will be **admin** by default.)



Rev. Date <b>Jun-29-2011</b>	Rev. <b>0.1</b>	Document No. <b>SEAG-005</b>
<b>Seagull 5000i BDU Firmware Upgrade Procedure</b>		

- 5) In the main page,
  - a. Click the **Setting** icon as shown below.

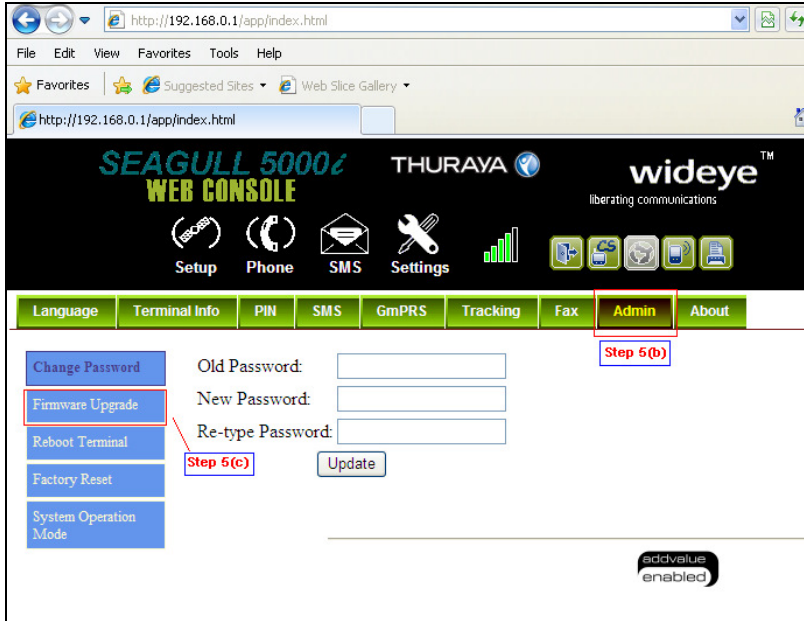


- a.
  - b. Click the **Admin** tab.

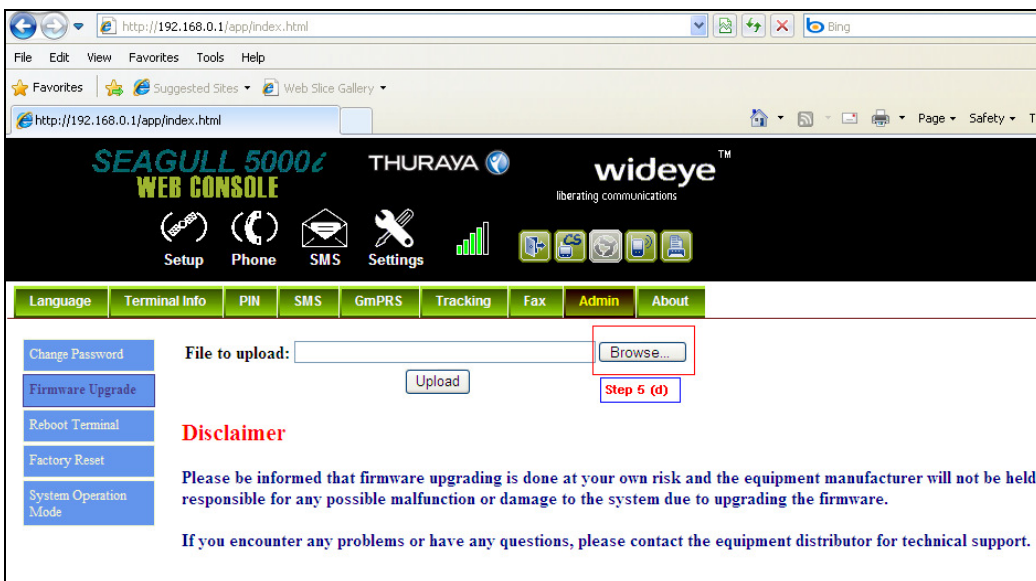


Rev. Date Jun-29-2011	Rev. 0.1	Document No. SEAG-005
<b>Seagull 5000i BDU Firmware Upgrade Procedure</b>		

c. Click [Firmware Upgrade](#) tab on the left hand side as shown below.



d. The following screen will appear and click the [Browse](#) button to select the new BDU firmware package to be uploaded.



Rev. Date <b>Jun-29-2011</b>	Rev. <b>0.1</b>	Document No. <b>SEAG-005</b>
<b>Seagull 5000i BDU Firmware Upgrade Procedure</b>		

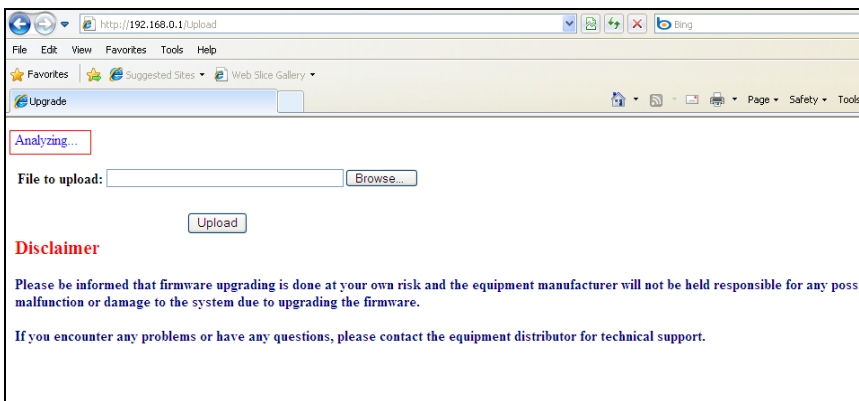
6) Select the new firmware file from a specific folder where the firmware is stored.

7) Then click the **Upload** button.

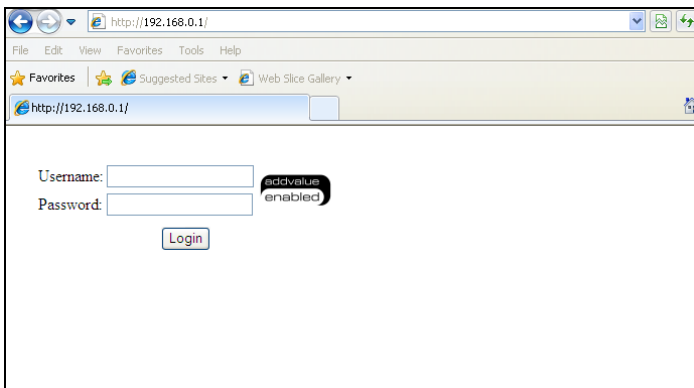


Rev. Date <b>Jun-29-2011</b>	Rev. <b>0.1</b>	Document No. <b>SEAG-005</b>
<b>Seagull 5000i BDU Firmware Upgrade Procedure</b>		

8) The WebConsole will start to upload the file and a small display window opens and shows **Analyzing**. Normally, it will take less than 10 seconds to complete the upgrade.



9) When the firmware upgrade is completed, the Terminal will reboot automatically and reload the login page. Verify whether the correct firmware is upgraded.



10) Seagull 5000i Terminal is ready for use.