



Thuraya XT-DUAL

Sync-Manager Manual

Version 1 / February 2012

1. INTRODUCTION.....3

2.1 SYNCHRONIZATION WITH WINDOWS 7 & VISTA (32BIT).....4

2.2 SYNC MANAGER WITH WINDOWS 7 & VISTA (32BIT).....7

 2.2.1 Features.....7

 2.2.2 Synchronization with MS Outlook.....9

 2.2.3 Rules of Synchronization.....11

3.1 SYNCHRONIZATION WITH WINDOWS XP (32BIT).....12

3.2 SYNC MANAGER WITH WINDOWS XP (32BIT).....14

 3.2.1 Features.....14

 3.2.2 Synchronization with MS Outlook.....16

 3.2.3 Rules of Synchronization.....18

1. Introduction

The Microsoft ActiveSync™ technology is an architecture specifically designed for data synchronization between a device running the Microsoft® Windows® CE operating system and a desktop computer.

With the XT DUAL Sync Manager you will be able to synchronize

- Schedules
- Tasks
- Contacts (Phonebook)

of your XT DUAL and MS Outlook on your PC.

Equipment & software requirements:

- Thuraya XT DUAL phone
- Thuraya XT DUAL driver*
- Sync Manager*
- USB data cable (included in your phone packaging)
- PC with Windows 7 (32bit), Windows XP (32bit) or Windows Vista (32bit)

** The driver and the Sync Manager can be found on the Support-CD included in your phone package or can be downloaded from the Thuraya website www.thuraya.com*

2.1 Synchronization with Windows 7 & Vista (32bit)

(Note: Setting up a partnership between the phone and the PC will be performed automatically once the phone is connected to your PC for the first time.)

The processes of synchronization are same in both Windows 7 and Windows Vista.

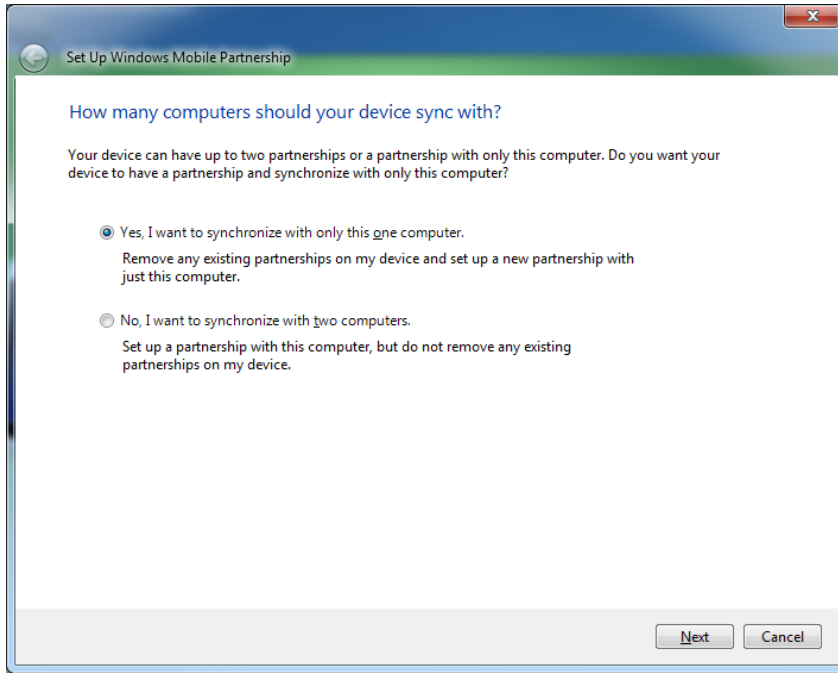
- 1) When connecting your Thuraya XT DUAL with your PC, the following screen will appear:



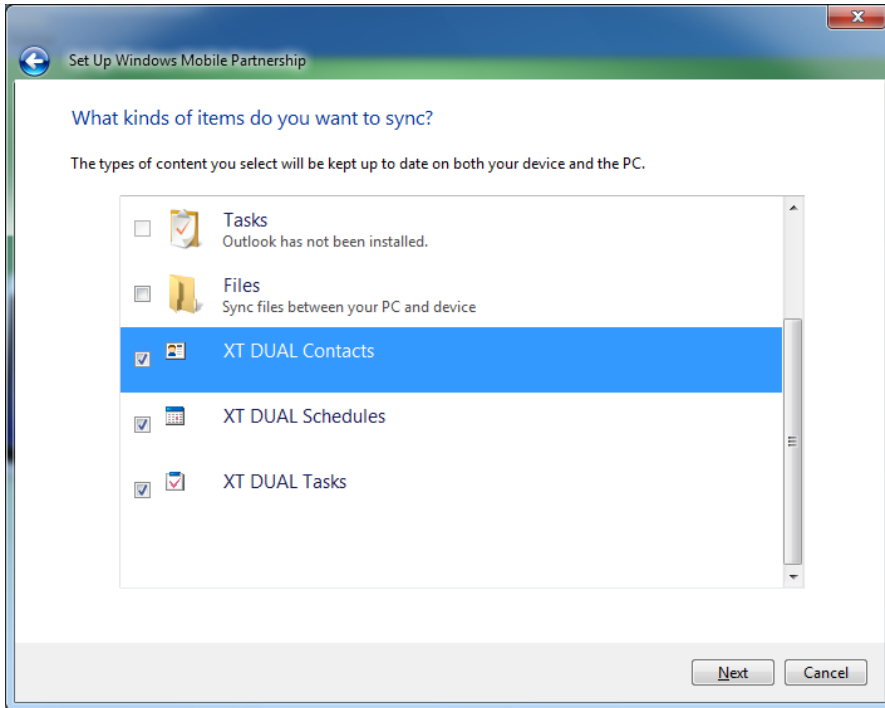
Select 'Set up your device'.

Caution: Do not select 'Set up your device' during a software upgrade.

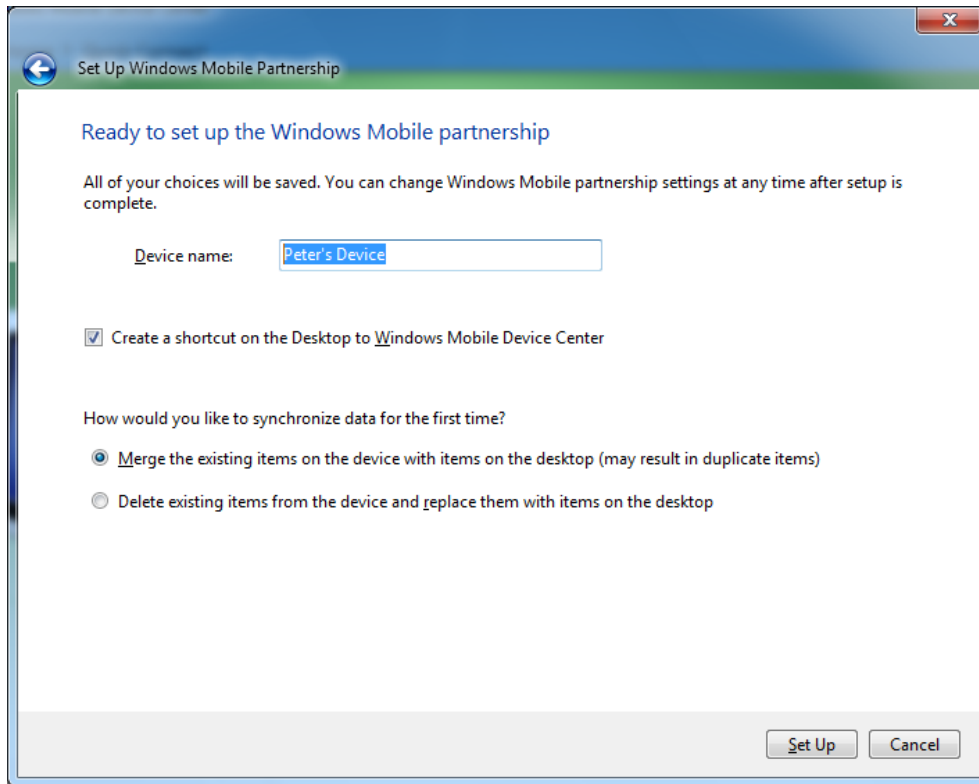
2) Select 'Yes' and click on 'Next'.



3) Choose 'XT DUAL Contacts', 'XT DUAL Schedules' and/or 'XT DUAL Tasks' and click on 'Next'.



4) Select 'Set Up'.



5) ActiveSync will now synchronize the items in your PC and your Thuraya XT DUAL.

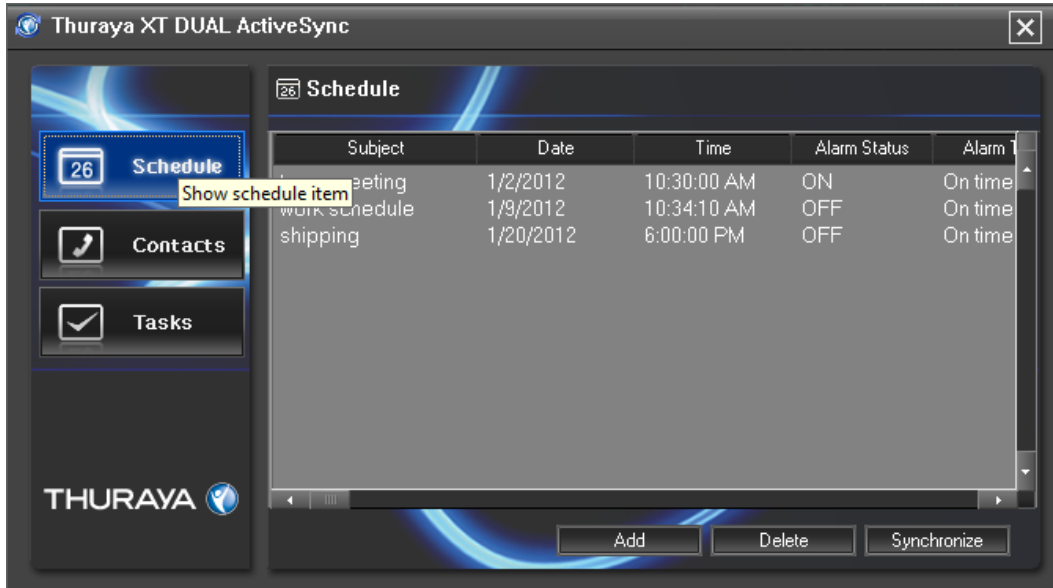


2.2 Sync Manager with Windows 7 & Vista (32bit)

2.2.1 Features

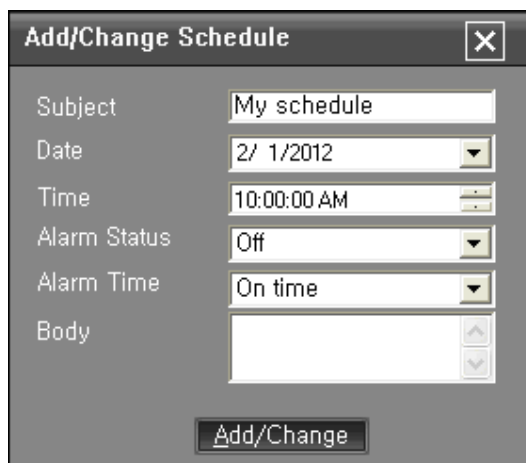
1) Display items

The Sync manager gives you an overview of all items that can be synchronized and lists all Schedules, Contacts and Tasks.



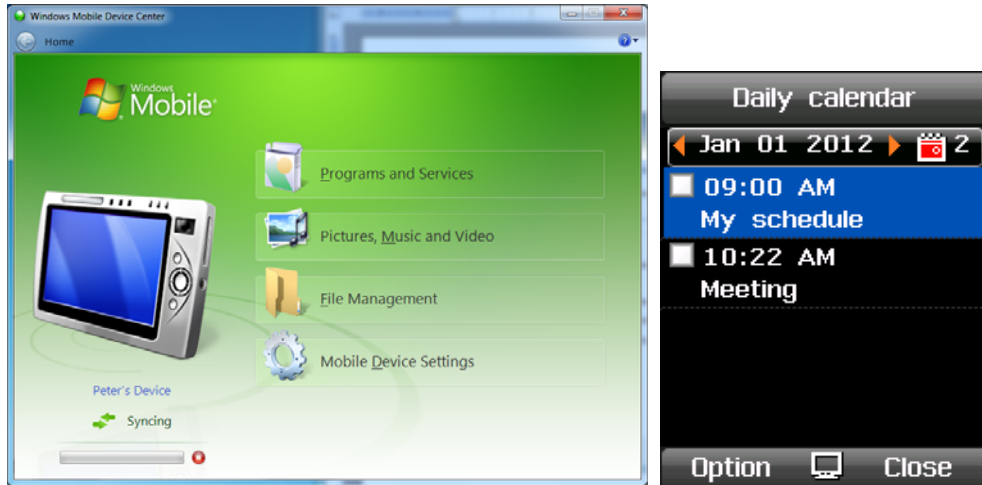
2) Add items

After clicking "Add", the following window will be shown:



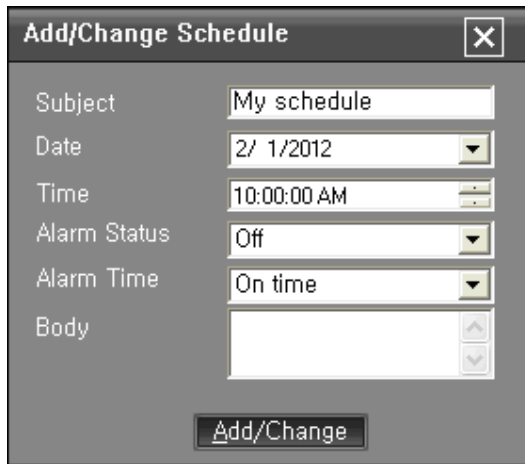
Complete the form and click on the 'Add/Change' button.

ActiveSync will then update the added information on your PC and your XT DUAL.



3) Change items

After double clicking on one of the items on the list, the following window will be shown:



Adjust the information and click the 'Change' button. The modification will be applied to both your PC and your Thuraya XT DUAL.

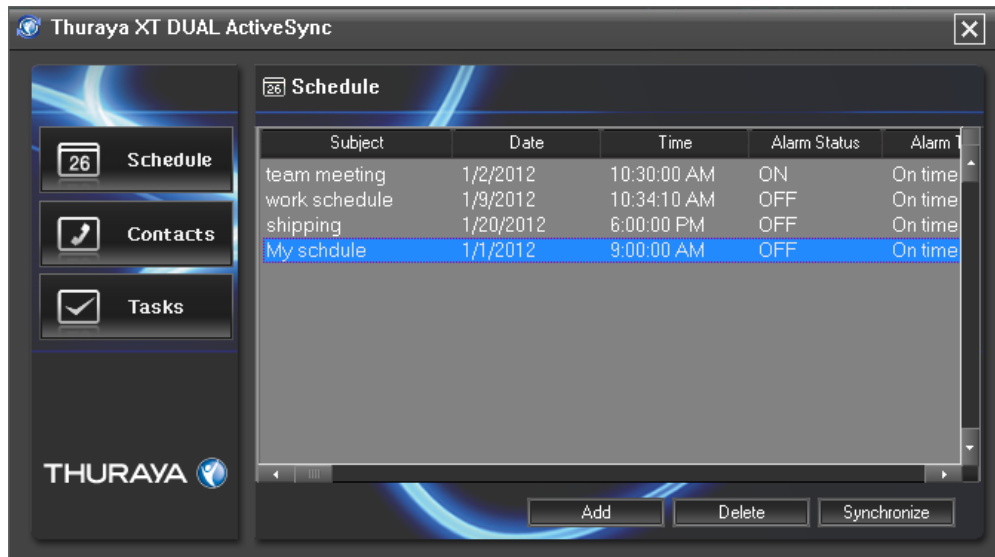
4) Delete

To delete entries, select the item from the list and click 'Delete' at the bottom. You can also delete multiple entries at the same time.

2.2.2 Synchronization with MS Outlook

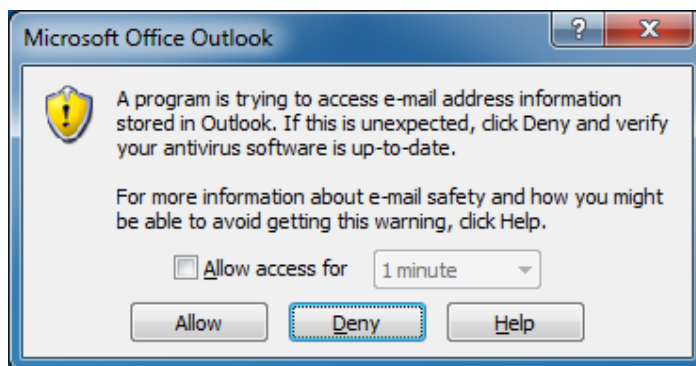
- 1) The Synch Manager will allow you to synchronize your XT DUAL with MS Outlook.

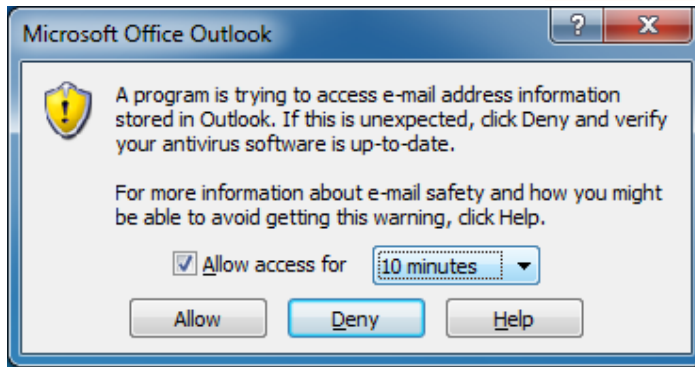
Caution: Please quit your MS Outlook session before starting the synchronization to avoid data loss.



Select 'Synchronize'.

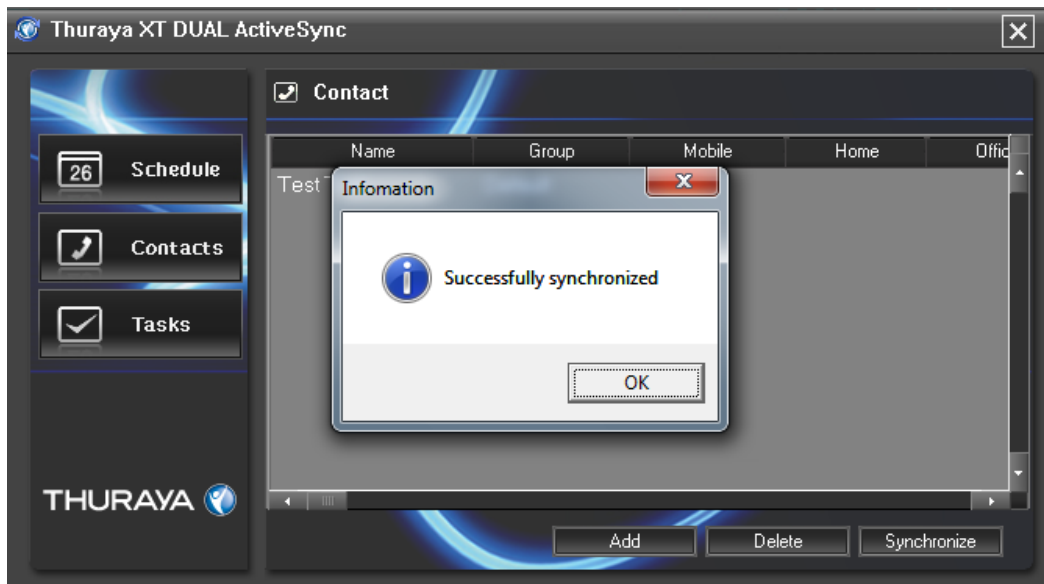
- 2) You will be asked to allow access to MS Outlook.





Set access time and select 'Allow'.

- 3) First the synchronization between the Sync Manager and MS Outlook will be conducted.



- 4) Afterwards the synchronization with the XT DUAL will be performed.



2.2.3 Rules of Synchronization

- 1) If data has been changed on the PC and on the handset in a different way and the data does not match anymore, you will be able to resolve the differences with the link 'Resolve items':



You can now choose which version you would like to keep.

3.1 Synchronization with Windows XP (32bit)

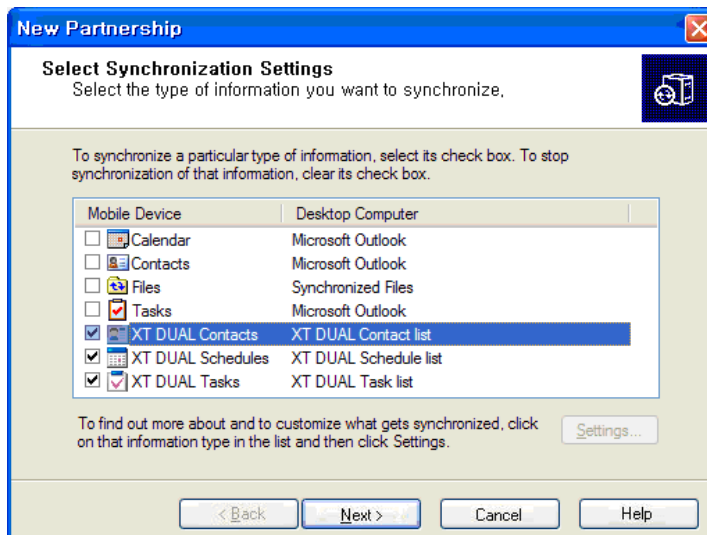
(Note: Setting up a partnership between the phone and the PC will be performed automatically once the phone is connected to your PC for the first time.)

- 6) When connecting your Thuraya XT DUAL with your PC, the following screen will appear:

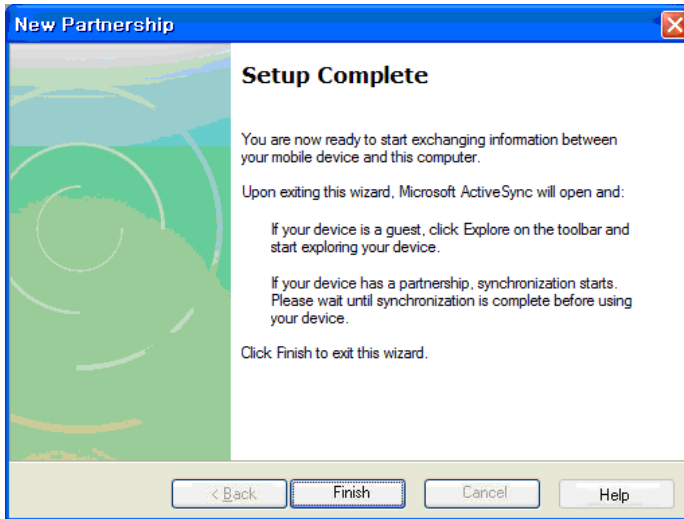


Caution: Do not select 'Yes' during a software upgrade.

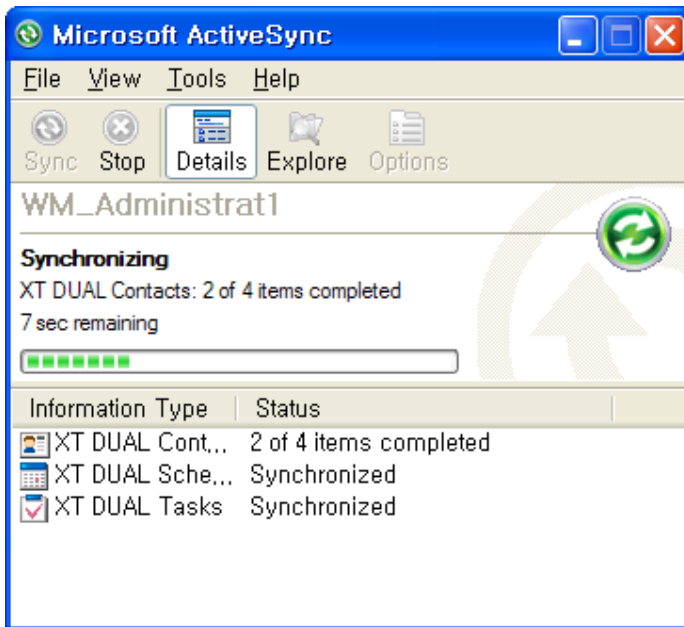
- 7) Select 'Yes' and click on 'Next'.



- 8) Select 'XT DUAL Contacts', 'XT DUAL Schedules' and/or 'XT DUAL Tasks' and click on 'Next'.



9) Select 'Finish'.



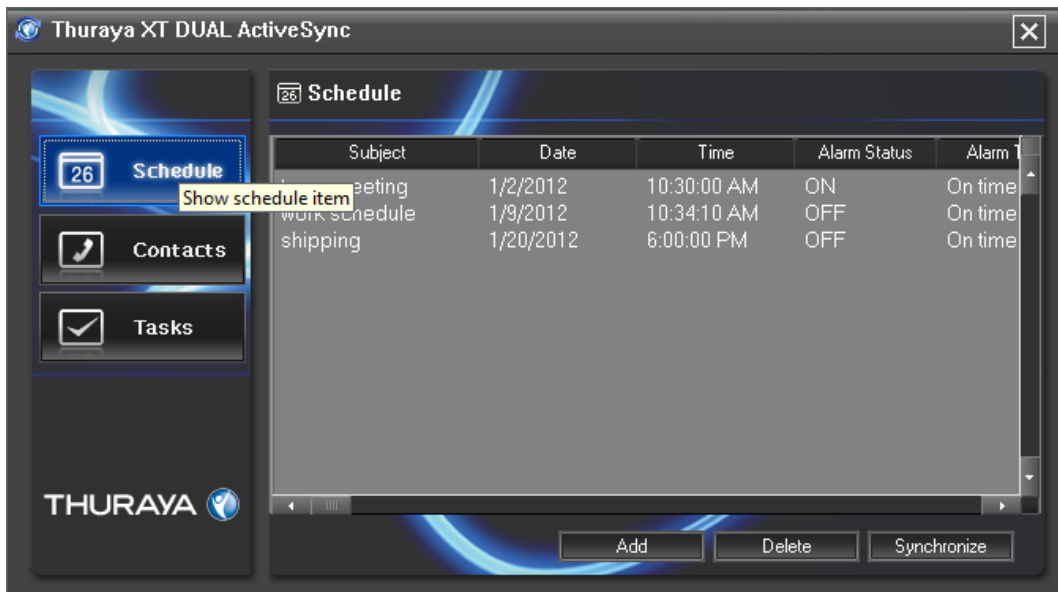
10) ActiveSync will now synchronize the items in your PC and your Thuraya XT DUAL.

3.2 Sync Manager with Windows XP (32bit)

3.2.1 Features

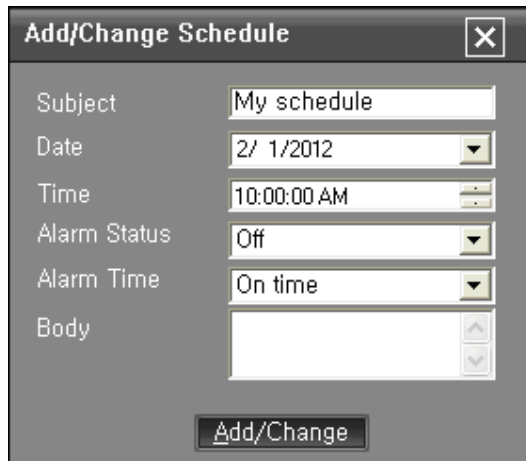
1) Display items

The Sync manager gives you an overview of all items that can be synchronized and lists all Schedules, Contacts and Tasks.



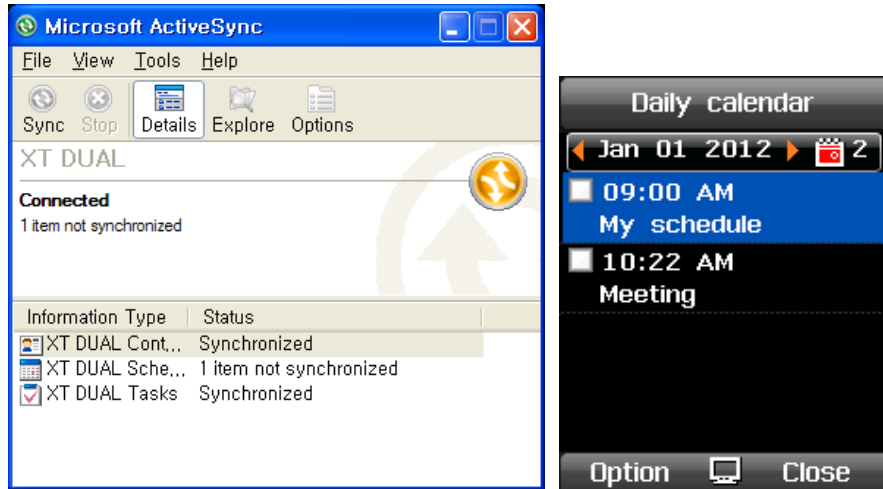
2) Add items

After clicking "Add", the following window will be shown:



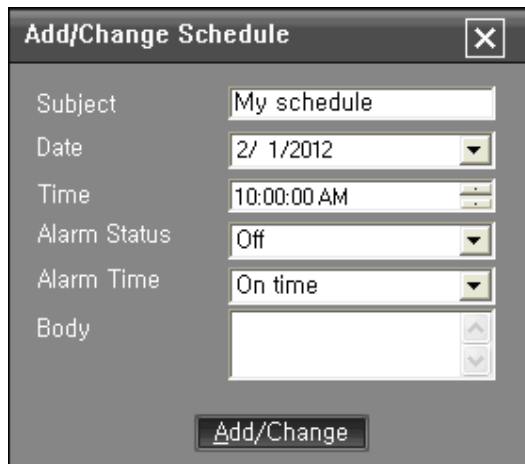
Complete the form and click on the 'Add/Change' button.

ActiveSync will then update the added information on your PC and your XT DUAL.



3) Change items

After double clicking on one of the items on the list, the following window will be shown:



Adjust the information and click the 'Change' button. The modification will be applied to both your PC and your Thuraya XT DUAL.

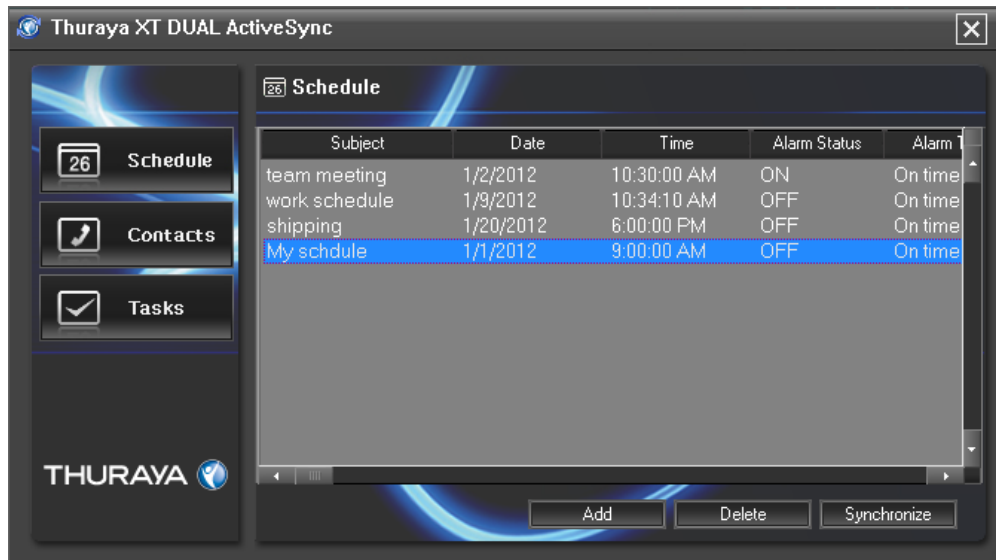
4) Delete

To delete entries, select the item from the list and click 'Delete' at the bottom. You can also delete multiple entries at the same time.

3.2.2 Synchronization with MS Outlook

- 1) The Synch Manager will allow you to synchronize your XT DUAL with MS Outlook.

Caution: Please quit your MS Outlook session before starting the synchronization to avoid data loss.



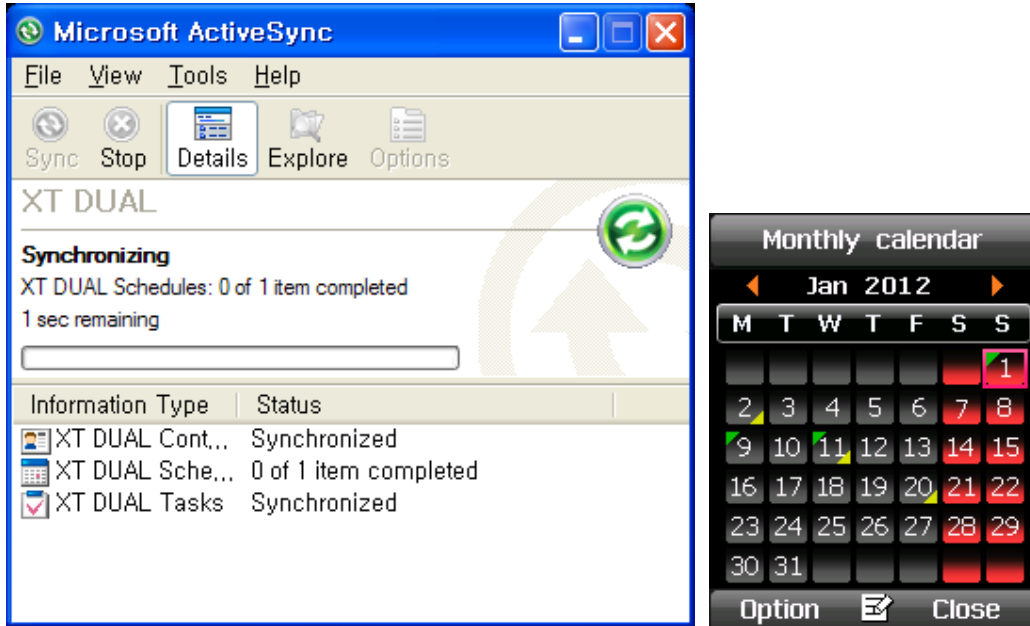
Select 'Synchronize'.

- 2) You will be asked to allow access to MS Outlook.



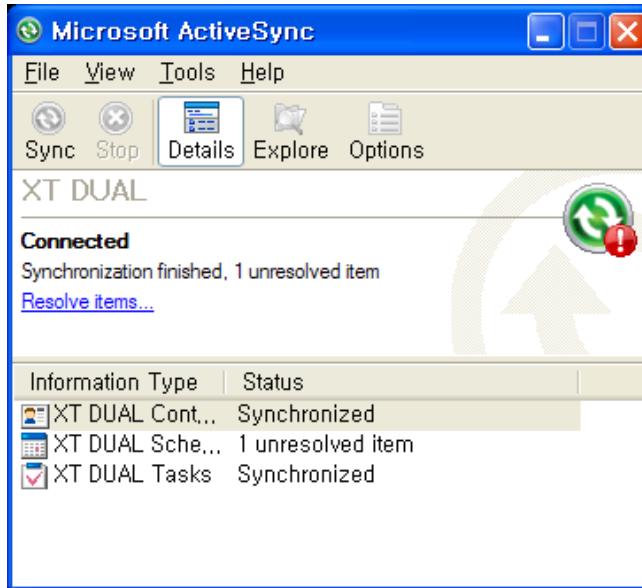
Set access time and select 'Yes'.

- 3) First the synchronization between the Sync Manager and MS Outlook and afterwards the synchronization with XT DUAL will be performed.

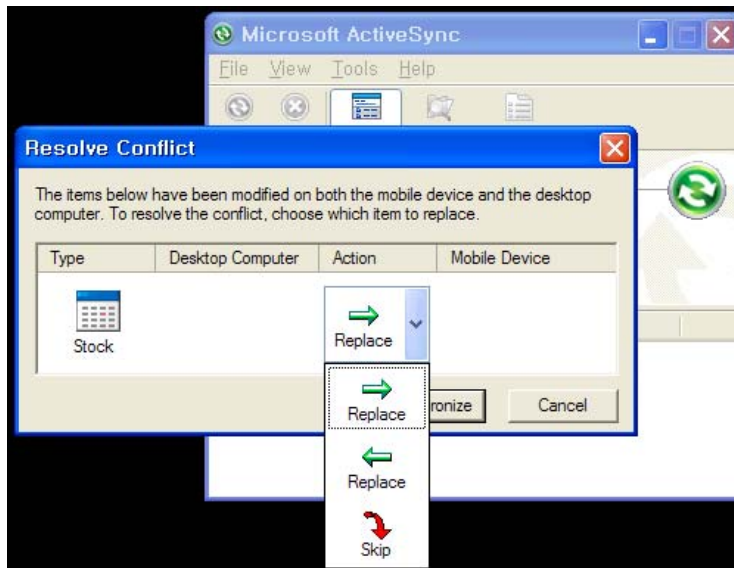


3.2.3 Rules of Synchronization

- 1) If data has been changed on the PC and on the handset in a different way and the data does not match anymore, you will be able to resolve the differences with the link 'Resolve items':



You can now choose which version you would like to keep:



- To apply the version from the PC, select Replace
- To apply the version from the XT DUAL, select Replace
- To keep the different versions as unresolved items, select Skip